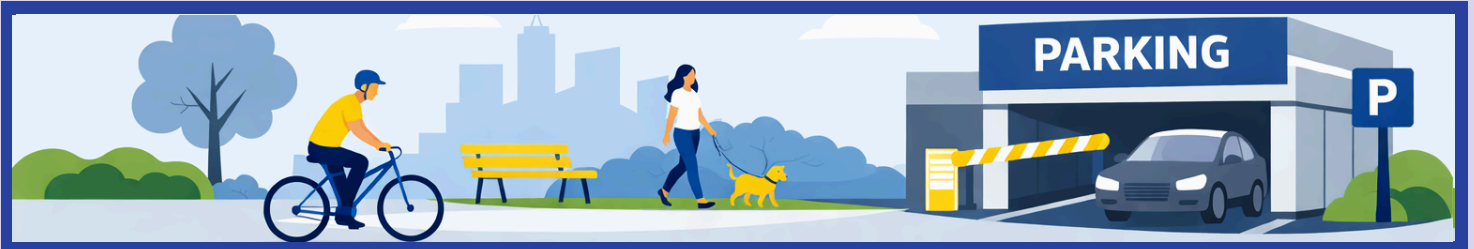




5 POLICY PRIORITIES



Safe, Sustainable & Resilient Infrastructure

Parking facilities must remain safe, adaptive and resilient to both physical and digital risks. EPA promotes sustainable and multifunctional designs that support daily mobility while providing emergency capacity during crises. Smart parking management underpins our approach to safer, cleaner and more reliable infrastructure, reducing congestion.



P -2

Electromobility Integration

Parking is becoming a key enabler of Europe's clean energy and sustainable mobility transition. EPA supports harmonised EV charging standards, smart grid integration and clear safety guidance, while promoting realistic, proportionate implementation that avoids one-size-fits-all requirements.



Effective Enforcement

Fair and accessible parking relies on effective, interoperable enforcement systems. EPA advocates for stronger cross-border cooperation, digital access to vehicle data and measures to reduce fraud and failure to pay, ensuring spaces remain available for those who need them most.



P -4

Urban Logistics Optimization & Kerbside Management

Kerbside space is a critical urban asset for deliveries, shared mobility and city access. EPA supports dynamic loading zones, bookable delivery bays and data-driven kerbside policies, including smart pricing, to reduce congestion and improve accessibility. Parking facilities play a role in sustainable last-kilometre logistics and integrated urban mobility strategies.



Digitalisation & Data-Driven Solutions

Parking must integrate seamlessly into Europe's digital mobility ecosystem. EPA promotes open, interoperable data platforms and real-time data sharing based on fair commercial frameworks, while ensuring protection of business confidentiality. We support innovation across the sector, including AI-enabled services and global standards such as APDS.



EUROPEAN
PARKING
ASSOCIATION
*Positively promoting
parking solutions
for sustainable mobility*

www.europeanparking.eu