

EUROPEAN PARKING ASSOCIATION

WWW.EUROPEANPARKING.EU



**EUROPEAN
PARKING
ASSOCIATION**

*Positively promoting
parking solutions
for sustainable mobility*

EPA MANIFESTO 2025-2030

FOREWORD

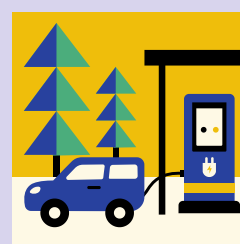
Europe's cities are transforming — reshaping how people move, connect, and share space. Parking, once seen as purely static physical infrastructure, now plays a dynamic role in this transition. Smart parking management policies support sustainable urban mobility, fleet electrification, urban logistics, and digital innovation — all central to achieving the European Union's climate and mobility goals.



The European Parking Association (EPA aisbl) and its members are proud to contribute to this fundamental transformation. The EPA Manifesto 2025-2030 sets out our shared vision and strategic priorities for the years ahead, reflecting EPA's renewed presence in Brussels and its close collaboration with European institutions and relevant partner organizations. Together, we aim to ensure that parking policies continue to serve citizens, businesses and cities, as a cornerstone of truly sustainable urban mobility.



Hence, this manifesto invites continued dialogue and collaboration at EU level to shape a parking sector that fully supports Europe's green and digital transitions.



EPA MANIFESTO 2025-2030

WHAT IS THE EUROPEAN PARKING ASSOCIATION?

The European Parking Association (EPA aisbl), founded in 1983, is the umbrella organization representing the national parking associations of geographical Europe. It brings together 20 national associations (Full Members) and over 60 Corporate Members from the wider parking and mobility services industry.

In 2023, EPA relocated its head office to Brussels to strengthen its engagement with European institutions and mobility stakeholders. From this base, it acts as the recognized voice of the European parking sector, promoting innovation, sustainability, and digital transformation within urban transport systems. EPA's Full Members, the national parking associations, are therefore crucial in ensuring that the transposition and implementation of EU policy into Member States' legislation is effective and fit for purpose.

EPA and its members play a vital role in redefining parking as an integrated mobility service and platform, supporting Europe's transition to sustainable, connected, and inclusive cities. It does so by amongst others organizing the biennial European Parking Conference & Exhibition, producing the quarterly industry magazine Parking Trend International (PTI) and managing the well-known European Standard Parking Award (ESPA) certification mechanism.

EPA's work aligns with EU priorities across five key areas: Safety & Security; Electromobility; Enforcement; Urban Logistics; and Digitalisation & Data. Through five policy priorities, as further defined below, EPA advocates for the parking sector's role in building safer, smarter, and more resilient urban environments while fostering cooperation, dialogue, and knowledge exchange across geographical Europe.

MEMBERSHIP

20 FULL MEMBERS

60+ CORPORATE MEMBERS



KEY DATES

1983 FOUNDED

2023 MOVED TO BRUSSELS



EPA MANIFESTO 2025-2030

WHAT DOES THE **SECTOR** REPRESENT?

Within the European Union, there are approximately 637 million parking spaces, around 10% of which are regulated (paid), representing an estimated market value of over €70 billion*. More than 500.000 European professionals are directly employed by the sector.

Parking management forms one of the backbones of Europe's urban mobility ecosystem, serving as a key enabler of sustainability, economic vitality, and efficient use of public space. A well-managed urban parking system benefits residents, visitors, businesses and city planners alike, ensuring that mobility infrastructure functions effectively for all its users. Well-designed parking assets also contribute to the efficient allocation of urban land, enabling greener public spaces, reduced congestion-related emissions, and enhanced liveability.

Parking is no longer a standalone utility. It underpins many of the European Union's overarching objectives for sustainable mobility and renewable energy systems — from multimodal mobility hubs and vehicle electrification to the integration of car sharing, bike sharing, and other new mobility services. A well-functioning parking sector is therefore essential to achieving Europe's resilience, climate, digitalisation, and accessibility goals.

*According to the EU-funded standardisation project EU-ICIP (SA 2019-03) - European ITS Communications and Information Protocols: <https://www.mobilityits.eu/parking>.



SECTOR REPRESENTS

PARKING SPACES (EST)

637,000,000

OF WHICH PAID PARKING

+/- 10%

MARKET VALUE (EST)

€70,000,000,000+

PROFESSIONALS

500,000+



EPA MANIFESTO 2025-2030

WHAT ARE THE CURRENT CHALLENGES?

European cities are facing complex mobility challenges that demand integrated and forward-looking solutions. The urgent need to reduce pollution and CO₂ emissions is reshaping transport and urban planning, while different modes of transport are not always available or well-connected, limiting flexibility for users. At the same time, on-street parking occupies significant urban space, placing pressure on land use and city design.

Citizens increasingly expect freedom and choice in how they move, along with digital, seamless, and user-friendly mobility services that match their everyday habits. Cities are also striving to be inclusive and accessible for everyone, ensuring equitable access to public space and mobility options. Meanwhile, the rapid growth of goods movement, particularly from e-commerce, has intensified demand for kerbside space and delivery access, adding further strain to already congested urban areas.

Addressing these challenges requires coordinated policy, innovation, and collaboration across all levels of government and the mobility ecosystem — including the parking sector, which plays a vital role in managing urban space, supporting electrification, ensuring fair and efficient urban access to both citizens and businesses, all while contributing to local public finances.

AT A GLANCE

POLLUTION & CO₂

INTERMODAL GAPS

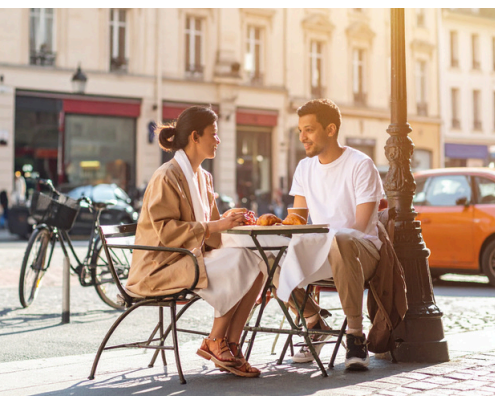
SPATIAL COMPETITION

DIGITAL MOBILITY

ACCESSIBILITY

KERBSIDE PRESSURE

CONGESTION



EPA MANIFESTO 2025-2030

WHAT DOES THE **SECTOR** WANT?

The European parking sector seeks to fully align itself with the EU's mobility and climate objectives, ensuring that policy, investment, and regulation reflect the essential contribution of parking to sustainable and resilient urban transport systems. The sector's focus areas include:

- ▶ **Environmental sustainability and climate action**, underpinned by EU initiatives such as the Green Deal, Fit for 55 package, and the Urban Mobility Framework. The sector calls for proportionate investment in electric vehicle charging infrastructure based on evolving market demand, and the transformation of parking facilities into multimodal mobility hubs.



- ▶ **Resilience and preparedness**, recognizing parking infrastructure's strategic potential in civil protection and military mobility. Across Europe's 40-50 million underground spaces, facilities could be adapted to support emergency operations through enhanced safety, connectivity, and crisis planning.



- ▶ **Technological advancement and digitalisation**, through innovation in smart parking solutions that anticipate demand, optimize space, and improve the user experience — all while reinforcing cybersecurity resilience.



- ▶ **Economic and social balance**, with fair pricing, accessible mobility for all, and recognition of parking's contribution to urban health, accessibility, and economic vitality.



EPA MANIFESTO 2025-2030

OUR KEY RECOMMENDATIONS

EPA has outlined a series of strategic recommendations to guide the sector's contribution to Europe's sustainable, digital, and connected mobility transition by 2030. These recommendations reflect EPA's commitment to innovation, integration, and effective policy alignment across Europe.

➤ Transform parking facilities into multifunctional mobility and service hubs.

Both existing and newly built car parks should serve as multimodal hubs, integrating shared mobility, EV charging, logistics, storage and service functions. These hubs will form an "eco-network" at neighborhood, city, and regional levels, serving as connectors between transport, energy, and logistics.

➤ Reimagine on-street parking as dynamic kerbside management.

On-street parking space management must evolve, cf. the European Commission's Expert Group on Urban Mobility (EGUM) recommendations. Kerbside areas will host a wider mix of uses — from goods deliveries to micromobility and leisure functions — contributing to more efficient and inclusive urban space allocation. To this effect, EPA is an active partner in the EU-funded [DISCO project](#).

➤ Strengthen parking and access management to enhance livability.

The future urban landscape will see fewer random vehicles travelling within cities. Clear access and parking rights will enable visitors, citizens, and businesses to plan their trips in advance, improving accessibility and safety. EPA promotes interoperable systems for all vehicle types to support this transition.

➤ Promote fair and consistent parking pricing.

Parking should be priced appropriately across all parts of the city to ensure equity and effective space management. Transparent payment and enforcement mechanisms are vital to creating a sustainable system. Cross-border enforcement remains essential to ensuring compliance and fairness across the EU.

➤ Advance smart mobility and smart parking integration.

Parking infrastructure must be fully connected and informed through digital systems that enable seamless routing, booking, and payment. This reduces search traffic, optimizes the use of existing off-street infrastructure, and frees up valuable urban space. EPA supports common data standards through Alliance for Parking Data Standards ([APDS](#)) and continued collaboration within National Access Point Coordination Organisation for Europe ([NAPCORE](#)) to strengthen digital interoperability between vehicles, parking services, and city infrastructure.

➤ Accelerate AI-based and automated parking solutions.

Artificial intelligence will redefine parking operations — enabling smoother customer experiences, optimized capacity use, and safer, more efficient facilities. Automated Valet Parking (AVP) as a precursor to autonomous driving will enhance energy efficiency, capacity management, and charging operations, improving the overall urban mobility ecosystem.



EPA MANIFESTO 2025-2030

These recommendations are underpinned by EPA's five policy priorities, which guide its continuous engagement with European institutions, national authorities, and mobility partners. They provide the strategic framework through which EPA and its members contribute to Europe's sustainable, connected, and resilient mobility transition.

EPA'S FIVE POLICY PRIORITIES



1

SAFE, SUSTAINABLE & RESILIENT INFRASTRUCTURE:

Parking infrastructure must be robust and adaptive, addressing both digital and physical risks — from cyberattacks on smart systems to the growing impacts of climate-induced extreme weather. Beyond daily use, parking facilities can also serve as emergency shelters and logistics hubs during crises (whether natural or man-made). EPA advocates for sustainable and multifunctional parking designs that enhance safety, security, reliability, and environmental performance.



EPA promotes smart parking management as a core element of sustainable urban mobility — helping reduce search traffic, congestion, pollution, and CO₂ emissions while improving access to cities' economic, social, and cultural fabric.



We will integrate sustainability considerations across all our activities, addressing ESG compliance, Net Zero objectives, the carbon footprint of parking real estate, and aim to inform our members about funding opportunities linked to electromobility and green and secure infrastructure.



We recognize the importance of resilience and preparedness in response to natural and man-made crises. Drawing lessons from recent floods and other natural disasters, as well as the experiences of countries affected by military conflicts, EPA encourages dual use design strategies and contingency planning that enable parking facilities to contribute to civil protection, emergency logistics, and national preparedness frameworks.

EPA MANIFESTO 2025-2030

EPA'S FIVE POLICY PRIORITIES



2

ELECTROMOBILITY INTEGRATION:

Parking facilities are evolving into renewable energy hubs, supporting the EU's clean industry and sustainable mobility objectives. EPA calls for standardized charger types, enhanced (smart) grid capacity, transparent pricing, and harmonized safety protocols.



EPA will continue to assess how the growing electric vehicle market is shaping parking operations and reinforce the sector's essential role in the deployment of charging infrastructure - based on realistic market demand, while advocating for proportionate instead of linear "one-size-fits-all" recharging points targets.



We will closely monitor national implementations of key EU legislation such as the Energy Performance of Buildings Directive (EPBD) and the Alternative Fuels Infrastructure Regulation (AFIR), to prevent national or local deviations that increase administrative or financial burdens on the sector.



We continue to advocate for clear and consistent EU guidance on EVs and fire safety, including through European Commission initiatives such as the Sustainable Transport Forum (STF) expert group and EPBD Article 14, which required the Commission to publish guidance for fire safety in car parks by 31 December 2025. To this end, EPA has published its [Fire Safety Advice - Toolbox](#), which we will continue to further develop and promote.

EPA MANIFESTO 2025-2030

EPA'S FIVE POLICY PRIORITIES



3

EFFECTIVE ENFORCEMENT:

Effective enforcement ensures equitable access and reduces fraud and failure to pay, particularly in the use of disabled parking permits (so-called Blue Badges/PMR) and by non-resident drivers respectively. EPA promotes interoperable digital systems to streamline compliance, minimize administrative burdens, and ensure spaces remain available for those who need them most.



EPA advocates for effective cross-border enforcement of parking infringements, ideally through an EU-wide exchange of information system, such as EUCARIS, established on an appropriate legal basis like the EU Cross-Border Enforcement (CBE) Directive.



We call for properly functioning digital access to vehicle keeper and holder data, to enable the implementation of free-flow parking models across Europe (both on- and off-street).



We seek to reduce Blue Badge (PMR) fraud by ensuring our public and private sector members' concerns and technical recommendations are reflected in the implementation of the recent EU Directive on the European Parking Card for persons with disabilities.

EPA MANIFESTO 2025-2030

EPA'S FIVE POLICY PRIORITIES

4

URBAN LOGISTICS OPTIMIZATION AND KERBSIDE MANAGEMENT:



The kerb is a critical urban asset, heavily utilised by delivery vehicles, ride-hailing services, and shared mobility. EPA supports dynamic loading zones, bookable delivery bays, and smart pricing to reduce congestion and improve accessibility in European cities.



EPA contributes to smart kerbside management policies and projects, such as the EU-funded DISCO project, to promote the role of the parking sector and its mobility hubs within integrated urban logistics strategies.



We support efficient last-kilometer delivery solutions, leveraging the proximity of parking facilities to citizens and businesses in city centers to enhance sustainability and reduce emissions.



We will continue to monitor the rollout of Urban Vehicle Access Regulations (UVARs) to ensure alignment and compliance with parking management frameworks, in line with the European Commission's Expert Group on Urban Mobility (EGUM) recommendations on UVARs and parking management.



We acknowledge the specific mobility and sustainability challenges faced by tourism-intensive cities, where fluctuating visitor flows and seasonal peaks place additional pressure on urban transport systems. We support integrated mobility strategies that include designated access zones for tourist coaches and buses, efficient off-street facilities, multimodal transfer points, and demand-responsive traffic management.

EPA MANIFESTO 2025-2030

EPA'S FIVE POLICY PRIORITIES



5

DIGITALISATION AND DATA-DRIVEN SOLUTIONS:

Parking must integrate seamlessly into the EU's Sustainable and Smart Mobility Strategy. EPA promotes open data platforms, interoperable systems, and real-time data sharing based on commercially fair agreements between producers and users of such data. These will allow the sector to continue to deliver innovative, efficient, and accessible parking services.



EPA will continue to engage with the European Commission on the practical requirements for parking data sharing under the EU Delegated Regulations of the Intelligent Transport Systems (ITS) Directive, while ensuring the protection of members' trade secrets and business confidentiality. To this end, we have published the Parking Data Essentials series, which we will maintain up to date and ensure its uptake.



We will continue to promote APDS as the global standard for parking data exchange, supporting its adoption across connected sectors (EV charging, secure bike parking,...) to ensure alignment with EU legislation.



We will continue to collaborate with NAPCORE to ensure coherence between National Access Points (NAPs) and their requirements for parking data exchange.



We support the further development of AI-based parking solutions to enhance the customer experience and operational excellence — including Automated Valet Parking (AVP) as an early use case, notably through chairing the Enhancing Automated Valet Parking platform (EAVP). We recognize further efforts will be necessary when it comes to ensuring appropriate collection of quality data to “feed” the required AI algorithms, based on harmonized standards and political support.

EPA MANIFESTO 2025-2030

LOOKING AHEAD

EPA remains committed to working closely with the EU institutions, Member States, and mobility stakeholders to advance shared objectives for sustainable, connected, accessible and inclusive cities. By fostering technological innovation, supporting policy coherence, and promoting knowledge exchange across Europe, EPA will continue to highlight parking management's essential contribution to the EU's climate-neutral, digital, and resilient future.

EPA's National Parking Associations



Italy



ASEGGA
Asociación Española
de Aparcamientos y Garajes
Spain



BRITISH PARKING ASSOCIATION

United Kingdom



Belgian Parking
Federation

Belgium



BULGARIAN
ASSOCIATION FOR
PARKING AND SUSTAINABLE
URBAN MOBILITY

Bulgaria



BUNDESVERBAND
PARKEN e.V.

Germany



ČESKÁ PARKOVACÍ ASOCIACE

Czech Republic



Danske Private Parkeringsselskabers Brancheforening

Denmark



France



Croatia



Ireland



Norway



POLSKA ORGANIZACJA
BRANŻY PARKINGOWEJ
Poland



Switzerland



Slovakia



Finland



Sweden



Serbia



Netherlands



Tankstellen • Garagen • Service

Austria



EUROPEAN
PARKING
ASSOCIATION
Positively promoting
parking solutions
for sustainable mobility