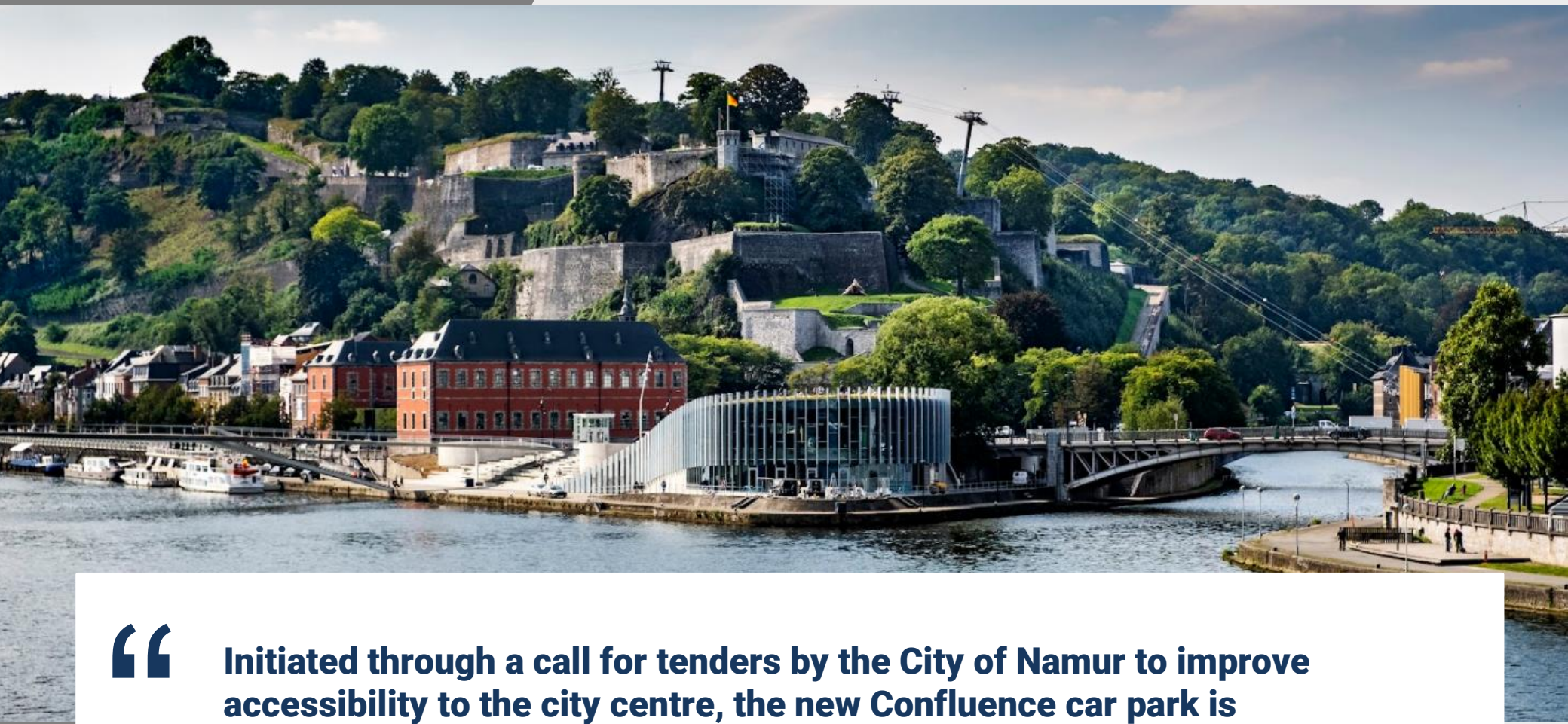




EPA AWARDS 2022

► CATEGORY 1: "INTERPARKING - CONFLUENCE" | NAMUR (BELGIUM)

 **Interparking**



“

Initiated through a call for tenders by the City of Namur to improve accessibility to the city centre, the new Confluence car park is particularly strategic.

”



“

The place called "Grognon" where this car park was built has a rather particular topography: at the junction of two rivers and at the foot of a hill.

Previously, these different areas did not communicate, or communicated very poorly. From now on, the car park and its surface arrangement act as a platform, finally connecting the whole.

”



“

Given the location between two rivers and 9 meters below water level, this car park was designed as a floating boat, anchored in the rock. The weight of the structure was not sufficient to compensate for the water pressure. So, we placed no less than 400 anchors in the rock to ensure the stability of the structure. In addition, we had to provide several anti-flooding solutions.

Two watertight cofferdams were installed: one lifts up when it comes out of the ground and the other closes like a door if the Meuse overflows. In case of an even more exceptional flood, it also possible to submerge entirely the -4.

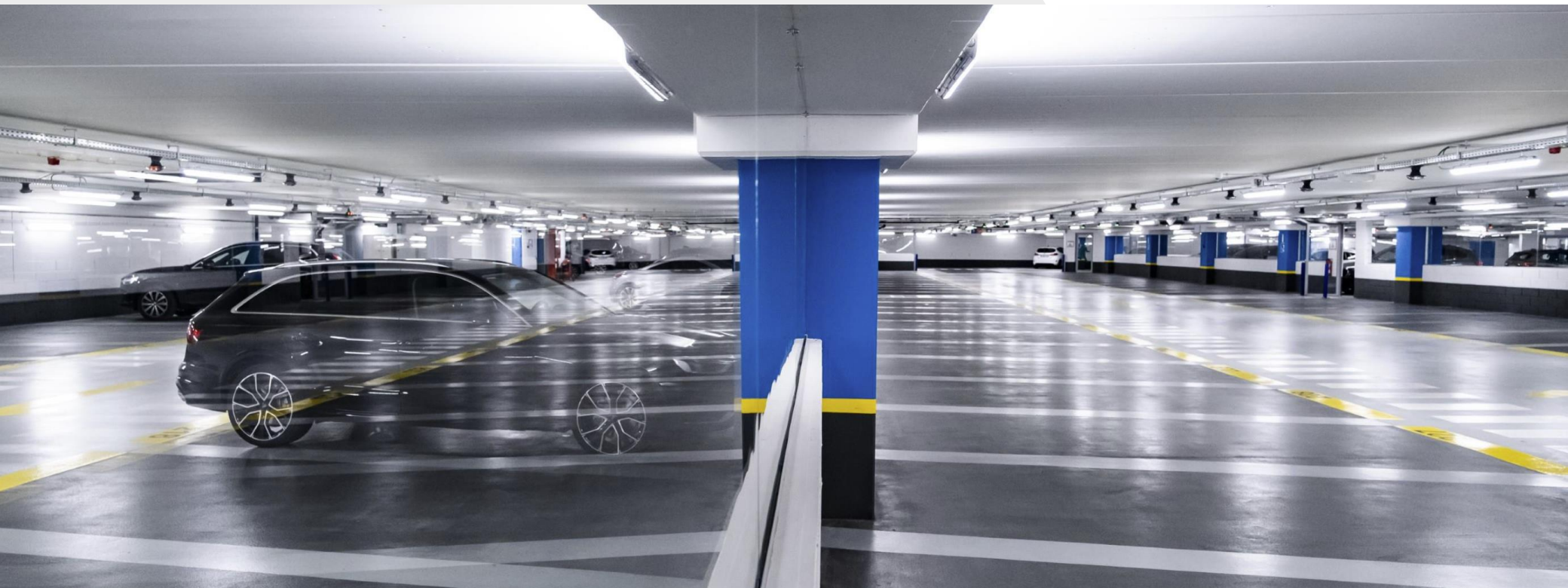
”



A hole of several square meters allowed the crane operator to see what was going on in the 4th basement, at all times. It was only later that the site teams dug the rock for the prefabricated structure.

“ To keep the light in the car park during the construction and to be able to quickly start the surface development (including the building of a conference center), we used the “Stross hole” technique: ”





“

The Confluence parking meets the ESPA Gold standards. The structure without columns between the cars and its large ramps allows motorists to park easily. Its Full LED lighting is well above industry standards while glass walls offer a greater visibility and increase the sense of security.

”



“

Confluence is the largest car park in the Walloon capital and one of the largest in the south of Belgium: it offers 670 parking spaces on four levels.

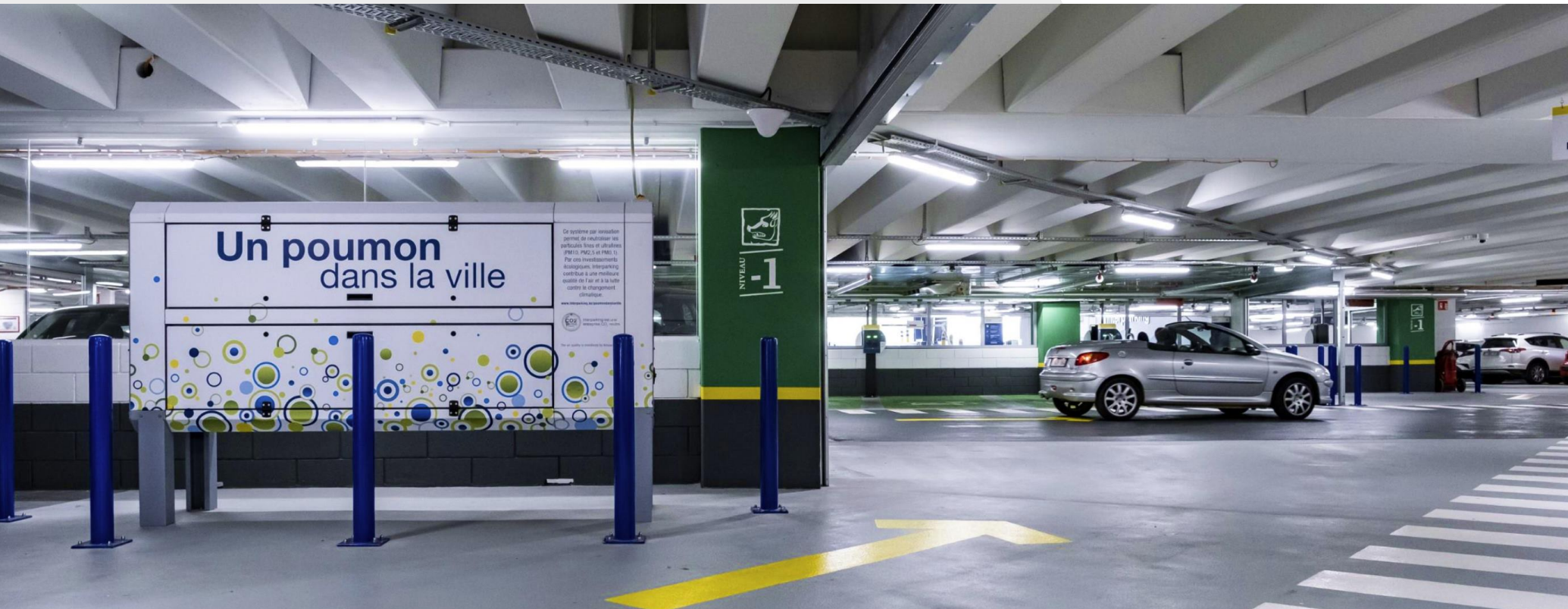
”



“ **670**
parking
spaces ”

- 18 EV charging points (and solar panels)
- 20 spots for bikes
- 20 spots for motorbikes
- 72 free lockers
- CO2 neutral

- Entrance : 6m
- Parking space : 2,45 x 5m
- Ramp width : 9m
- Headroom : 2m
- Aisle: 76°-90°
- Ramp Gradient inside : 12,5%



“ In addition to the standard ventilation system, we installed 11 “lungs of the city”. These ionization systems are continuously filtering the air, removing fine and ultra-fine particles.

”



This project is perfectly integrated in the landscape between the Citadel and two rivers. The entire redevelopment of the zone brings new life to the Southern side of the city (previously not used and abandoned) while blending harmoniously into the graphic and urban forms of Namur.